

# Private Pilot Knowledge Review Quiz - Multiple Choice

1. What type of airport sign is this? \_\_\_\_\_



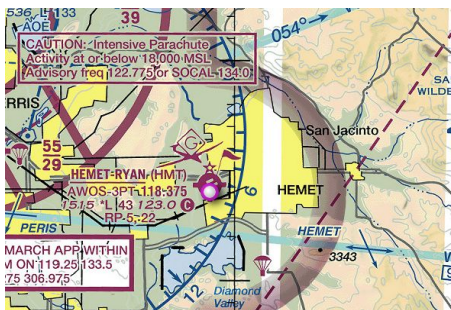
- a. Taxiway Location
- b. Taxiway Direction Sign
- c. Taxiway Ending Marker
- d. Distance Remaining

2. What type of airport light is blue? \_\_\_\_\_



- a. Runway Edge Light
- b. FBO Entrance Light
- c. Taxiway Edge Light
- d. Runway Threshold / End Light

3. What is the significance of the yellow tint on the chart around Hemet? \_\_\_\_\_



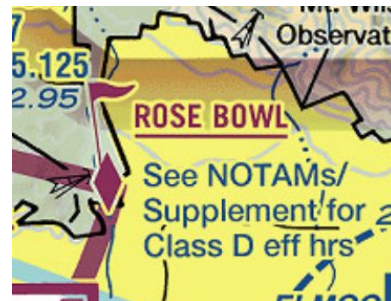
- a. Rural Land
- b. Protected Wilderness Area
- c. Populated Area (lit up at night)
- d. Dry Lake

4. What is this Miscellaneous Activity Area? \_\_\_\_\_



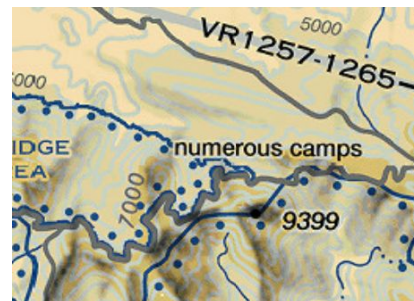
- a. Ultralight Activity
- b. Drone Operations Area
- c. Aerobatic Practice Area
- d. Space Launch Activity Area

5. Why is ROSE BOWL underlined on the below chart? \_\_\_\_\_



- a. It is over 1,000 feet tall
- b. It is a VFR Checkpoint
- c. It is a GPS Waypoint
- d. It has a Rotating Light

6. What is 9399 in the below chart? \_\_\_\_\_



- a. Highest Peak In the Vicinity
- b. Minimum Safe Altitude
- c. GPS Coordinates
- d. Position Accurate Spot Elevation

7. A clogged Pitot Tube only affects one instrument. Which is it? \_\_\_\_\_



- a. Airspeed Indicator
- b. Attitude Indicator
- c. Turn Coordinator
- d. Heading Indicator

8. What does 9900 on a Winds and Temps Aloft mean? \_\_\_\_\_

Winds/Temps Data						
Level:	<input checked="" type="radio"/> Low	<input type="radio"/> High	20Z-03Z	Rocky Mountain (Salt Lake C		
(Extracted from FBUS31 KWNO 221955)						
FDIUS1						
DATA BASED ON 221800Z						
VALID 230000Z FOR USE 2000-0300Z. TEMPS NEG ABV						
FT	3000	6000	9000	12000	18000	24000
PHX	9900 2306+18	2405+12	2908+06	2822-09	2828-21	
PRC		2310+11	2809+05	2919-09	2825-21	
TUS		2609+20	2511+12	2411+05	2921-08	2730-21

- a. Winds Are Greater than 99 knots
- b. Winds Are coming from Heading 090 at 9 knots
- c. Winds Are Light and Variable
- d. Measuring Equipment Is Out of Service

9. What type of maintenance can the holder of a private pilot certificate perform? \_\_\_\_\_



- a. Repairs
- b. Maintenance
- c. Alterations
- d. Preventative Maintenance

10. To meet the requirements for a sport pilot certificate (except for powered parachute privileges), cross-country time requires a point of landing that is more than \_\_\_ nm straight-line distance from the original point of departure.

- a. 10
- b. 25
- c. 50
- d. 75

## Private Pilot Knowledge Review Quiz - Answers

1. B. - Taxiway Direction Sign
2. C - Taxiway Edge Light
3. C - Populated Area (lit up at night)
4. A - Ultralight Activity
5. B - It is a VFR Checkpoint
6. D - Position Accurate Spot Elevation
7. A - Airspeed Indicator
8. C - Winds are Light and Variable
9. D - Preventative Maintenance
10. B - 25